



MICHIGAN SECTION AIPG NEWSLETTER

Michigan Newsletter



IN THIS ISSUE

From the President's Desk

by Tim Woodburne, CPG

This a true story. It is about a mistake I made in the field as a young geologist. Please learn from my mistakes.

I'm thinking back to one of my early days working as a professional. I was a fresh graduate, and I thought I was smart and was somewhat confident. Despite entertaining thoughts of continuing with school, I decided I wanted to work. And here was Environmental consulting. I landed the job. Hey- I can do this!

But... I realistically had some doubts. I was after all learning a new aspect of geology. In grad school, I learned about rocks, volcanoes, faults, depositional environments, sediments and physical chemistry and geochemistry. I had never done this work before.

The first summer of my new professional job, I was sent out to collect samples from a drilling rig. We were asked to collect samples in a wooded area. Events were supposed to be in this order: brush clearing guy was supposed to clear the way, then the stakes were to be set by surveyors, then we would bring in the rig to drill and collect the samples at the stake locations.

Somehow the order got screwed up. The stakes were set in the woods first, then the brush and tree contractor came after. They cleared the way for the drilling rig, and wiped out everything in its path ...including the stakes.

I thought no problem, I can work through this. I can scale off the site map at 1 inch = 200 feet to the determine the staked locations for the drilling. But, I left my engineering scale in the office. No time to get it. Instead I used my tape divided into 0.1 foot increments to determine the distance to where the stakes were or once were. I proceeded with the drilling and sampling as scheduled. In case you did not get it - 0.1 foot increments do not equal one inch increments. I was trying to determine the distance using 0.1 foot and not 1 inch. Needless to say, it did not work.

Back at the office, I explained the days sampling to my supervisor. That's when my supervisor helped me realize the mistake - or more accurately, I figured it out as I was talking. My tape measure solution was way off!

Article continues on Page 6...

Regulatory Roundup

The latest on Michigan's legislation and proposed rules...

Page 6



Student Chapter News

See what the WSU and MTU student chapters have been up to recently.

Pages 12 and 13



14th Annual Golf Outing

The Michigan Section's 14th Annual Golf Outing is May 15, 2018.

Page 13

GEOSCAPE

EST



2010

Rock Shop



**ROCKS - MINERALS - FOSSILS
JEWELRY - LANDSCAPE ROCKS**

**Open Weekends: Fri&Sat: 11am-7pm
Sun: 11am-5pm**



**37111 RED ARROW HWY,
PAW PAW, MI**



Like us on Facebook!

The Choice of Environmental Professionals

Make Fibertec Your One-Stop Shop for:

- Analytical Laboratory
- Geoprobe/Subsurface Investigations
- Industrial Hygiene
- Private Utility Locating
- Drum Disposal
- NELAC Accredited
- Electronic Data Deliverables (EDDs)



Holt • 517-699-0345
 Brighton • 810-220-3300
 Cadillac • 231-775-8368
 E: lab@fibertec.us
 W: www.fibertec.us



Clear Solutions for a Complex World

Tetra Tech's innovative, sustainable solutions help our clients reach their goals for water, environment, infrastructure, resource management, energy, and international development projects.

We are proud to be home to leading technical experts in every sector and to use that expertise throughout the project life cycle. Our commitment to safety is ingrained in our culture and at the forefront of every project.

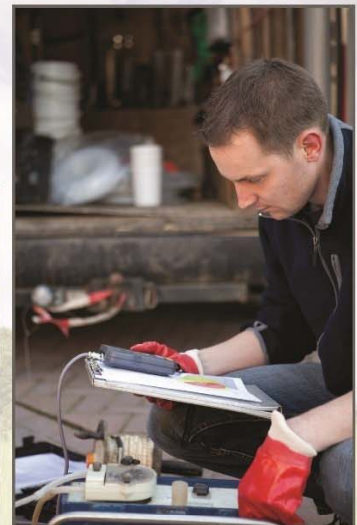


TECHNICAL SKILL .
CREATIVE SPIRIT .

Celebrating Over 55 Years of Award Winning Service

Engineering Solutions that work for your business

SURVEYING
GEOTECHNICAL ENGINEERING
CIVIL ENGINEERING
LANDSCAPE ARCHITECTURE
ENVIRONMENTAL CONSULTING
CONSTRUCTION ENGINEERING



Canton, MI
(734) 397-3100

Detroit, MI
(313) 961-9500

Lansing, MI
(517) 316-9232

Monroe, MI
(734) 289-2200

Traverse City, MI
(231) 929-7330

Maumee, OH
(419) 891-2222

Columbus, OH
(614) 441-4222

Cleveland, OH
(216) 378-1490

WWW.MANNIKSMITHGROUP.COM

OUR SERVICES



Environmental Construction & Site Remediation

For more information, please visit jssmi.com

Contact: Derek at dmarranca@jssmi.com

- ◇ Excavation & Transportation
- ◇ Remediation System Construction
- ◇ Site Remediation
- ◇ Riverbank Restoration
- ◇ Slope Stabilization & Erosion Controls
- ◇ Sediment Removal & Stabilization
- ◇ Wetlands Construction
- ◇ UST/AST
- ◇ Landfill
- ◇ Operation & Maintenance
- ◇ HDPE Fusion Welding & Fabrication
- ◇ Air Knife, Soft Dig & Vacuum Extraction



EXPERIENCE

SAFETY

RESULTS

Since 1999

4395 Wilder Road
Bay City, Michigan 48706
Phone: (989) 671-3318

-- Continued from Page 1 --

The field map had used a scale of one inch to represent every 200 feet. Feeling really stupid, and noticeably embarrassed, a knot was rising in my throat. I wanted to hide and not tell anyone or lie to cover it up and somehow fix it. I felt like quitting my new job.

A few of the locations I sampled were acceptable and the samples tested. However, many of the other locations were not. They had to be re-drilled to collect new samples. I had to explain to the drillers why we had to drill again. Plus we, the Environmental consulting company, had to pay for the re-drilling, the new sampling, and do this in time to fix the error by deadline. This all added to my young professional embarrassment.

To my shock and amazement, I was not fired. But I hated making that mistake. None of us likes making mistakes I believe. Looking back on it, I learned the hard way about what NOT to do during a sampling project. And in the process of that embarrassing blunder, I also realized what it means to be a professional person. As hard as it was not to tell a false "fix-it" lie, I had to admit to my mistake when it happened. It was the right thing to do. That is a true professional standard.

Finally, we all know that mistakes are made in professional situations every day. Each of you may have a similar story as mine. What matters is how we deal with it. I have learned to plan my work ahead of time. Sometimes I feel extremely busy, and I have found that this is when I tend to make mistakes. Planning ahead, I have found, helps a lot. Please remember to be honest, sort through the facts, and I hope this will help you in your professional career in the long run. I believe this is what AIPG stands for in ethics and integrity as we do the work we do to benefit our society.

Support Our Sponsors!

The Section Executive Committee would like to remind its members to support the companies advertising in the newsletter. Consider working with these companies, and when you speak with their representatives, let them know that you saw their ad in the Michigan Section newsletter.

April Section Meeting

The Section held its second meeting of the year at the University Center at Central Michigan University in Mt. Pleasant on April 12th. Although overall attendance was down,

the meeting saw a record number of students (21) in attendance.



Stephan Hlohowskyj presenting his talk following dinner. Photo courtesy of Adam Heft.

The students got in some good networking before dinner, and brought some mineral samples and other items for attendees to purchase as part of the Chapter's ongoing fundraising activities. During the evening, the question on the mind of several CMU students was "Where's Western?!" since several WMU students that were at the February meeting said they planned to be at this meeting.

Stephan Hlohowskyj, Ph.D. student, provided a very interesting and entertaining presentation about "A Geologist's Journey to the Galapagos: How the Climate Influences Geochemistry."



ESC is a single location nationally certified full service environmental laboratory. We provide analyses on soil, groundwater, wastewater, drinking water, air, mold and TCLP matrices. With over 90,000 operational square feet on a single campus, nearly 24/7 staffing and redundant instrumentation for most analyses, our 250+ staff owners are prepared to meet today's challenges of large sample sets, low reporting limits and fast turnaround.

ESC is well positioned to serve as your primary laboratory resource in quality, service and capacity. Our demonstrated commitment to being the industry leader in certifications held, easy-to-use field ready sample kits and sample transport logistics has provided us many growth opportunities in major metropolitan areas as well as in the far off corners of the United States

Internet Access - Password Protected Web Site
Custom Sampling Kits
Saturday Receiving

ESC is accepting the Reduced Volume methods for Groundwater samples for PAHs, DROs, SVOCs, PCBs, & Pesticides in Michigan. Using 40 mL amber vials and/or 100 mL amber jars, these Reduced Volume methods replace the 1 liter amber bottles that have previously been used.

ESC is pleased to announce the acquisition of Outreach Laboratory. The result of this acquisition is the expansion of technologies, expertise, and capabilities of the nation's most certified and accredited laboratory to include radiochemistry testing

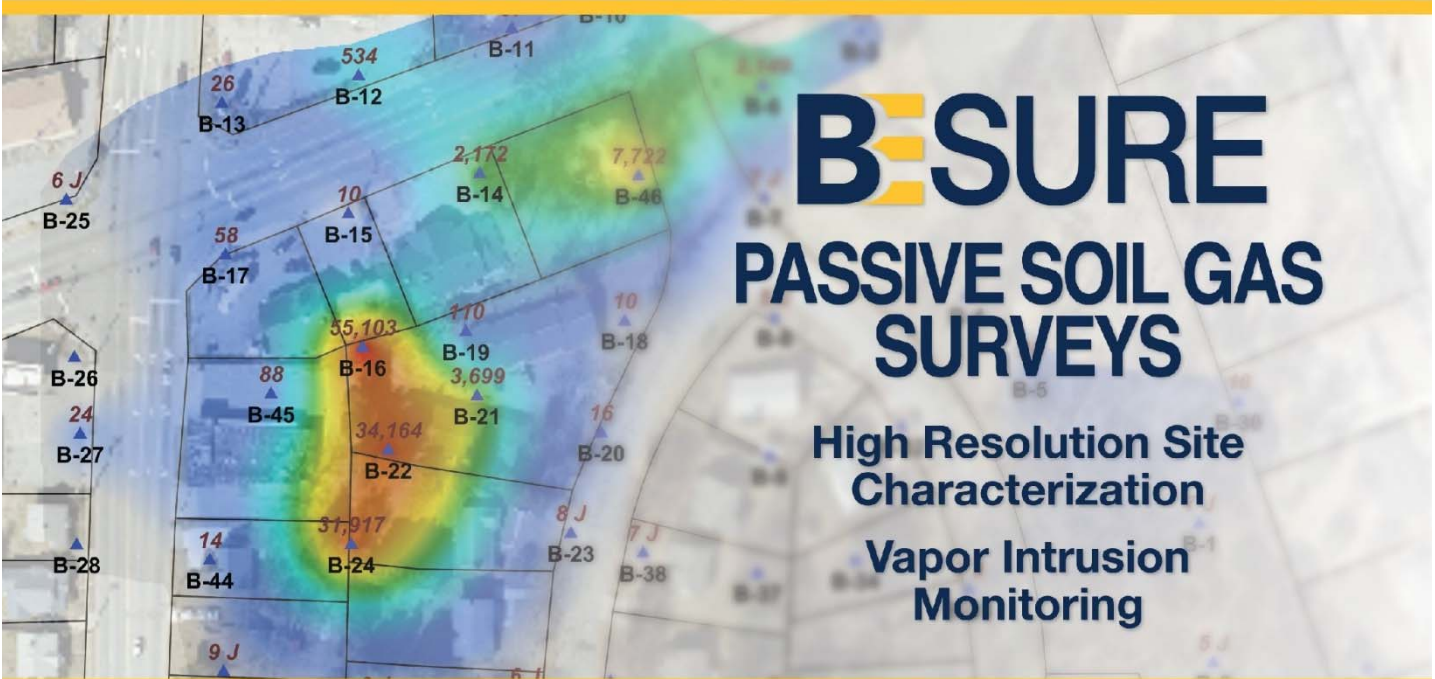
**NELAC, A2LA, AIHA, Corps of Engineers
DOD, EPA, USDA Certified.**

Please contact Duane Hatten (616) 307-1587 or dhatten@esclabsciences.com

ESC Lab Sciences
www.esclabsciences.com



THE LEADERS IN SOIL GAS AND AIR ANALYSES SINCE 1999



BE SURE

PASSIVE SOIL GAS SURVEYS

High Resolution Site Characterization

Vapor Intrusion Monitoring

WE CAN BE YOUR GUIDE

TIME-INTEGRATED PASSIVE AIR SAMPLERS



SAMPLE FOR DAYS OR WEEKS



VAPOR INTRUSION MONITORING



FENCELINE EMISSION MONITORING



ACCREDITATIONS
 Laboratory - DoD ELAP, NELAP, & ISO/IEC 17025
 Sampling - TNI NEFAP | Soil gas & air sampling

WWW.BEACON-USA.COM
INFO@BEACON-USA.COM
 800-878-5510



CMU Student Chapter contingent at the meeting. Photo courtesy of Adam Heft.

Member Input Sought

The Section Executive Committee is seeking input from members on a variety of topics. Do you have any suggestions regarding speakers/presentation topics that you would like to hear? What about field trips or other events? Some place you'd like to see us go, or something you think the membership would enjoy doing? Then make your voice heard; please send your suggestions to one of the members of the Executive Committee; any of the six members would be glad to hear from you. AIPG is your organization. Please help keep it relevant and interesting for all by participating.

Regulatory Roundup

Stay informed! Changes to Michigan's environmental laws are routinely proposed

and impact the work we do. We encourage you as professionals in the environmental industry to step forward and lend your expertise and speak up when necessary. Awareness of what is happening that affects the work we do is the first step and from this awareness we know when to participate and help shape and create policy.

After all it was Thomas Jefferson who said, *"We in America do not have government by the majority. We have government by the majority who participate."*

We have provided quick links to the rules and bill search capability so that you may customize the information that you are seeking. For example, if you are interested in searching for bills that have been proposed in 2017 to amend Michigan's Natural Resources and Environmental Protection Act, just click on the bill search button below with the act's name and type in 451 of 1994 in the search fields provided. All bills that have been introduced will appear.

This edition's spotlight focuses on a provision in the budget bill for the Michigan Department of Environmental Quality. Several funding items that Governor Snyder added to the budget have been cut out by the legislature. One of these cuts includes the \$14.9 million Clean Michigan Initiative funds removed for response activities at environmental cleanup sites. There is no replacement funding identified. The money spent by the state on response activities is often spent with

environmental consultants and contractors doing the work.

Proposed \$65 Million in MDEQ Funding for Environmental Cleanup Rejected by Senate

Gongwer News Services reported on Thursday, May 3, 2018 that Senate Bill 854 that includes MDEQ's appropriations passed without \$65 million that would have been used for environmental cleanup. The proposal called for an increase of Michigan's low tipping fees to provide the \$65 million. Michigan's tipping fees are lowest in the region and the proposed raise would still keep Michigan's fees competitively low; however, the bill passed without the fees in a 29-7 vote along party lines.

Applied Water Quality and Environmental Sciences Since 1992



- Ecological Assessments
- Vibracore Sediment Sampling
- Water and Sediment Toxicity Testing
- Groundwater - Surface Water Interface Studies

• John Barkach ph:238-538-0900 jrbarkach@glec.com



CASCADE

<http://cascade-env.com/>

Thank you for sponsoring
the 2017 AIPG Michigan
Environmental Risk
Management Workshop as a
Huron Level Sponsor!

Environmental Advisory Boards

Natural Resources and Environmental Protection Act,
PA 451 of 1994, as amended, bill search

Safe Drinking Water Act,
PA 399 of 1976, as amended, bill search

Gas Safety Standards,
PA 165 of 1969, as amended, bill search

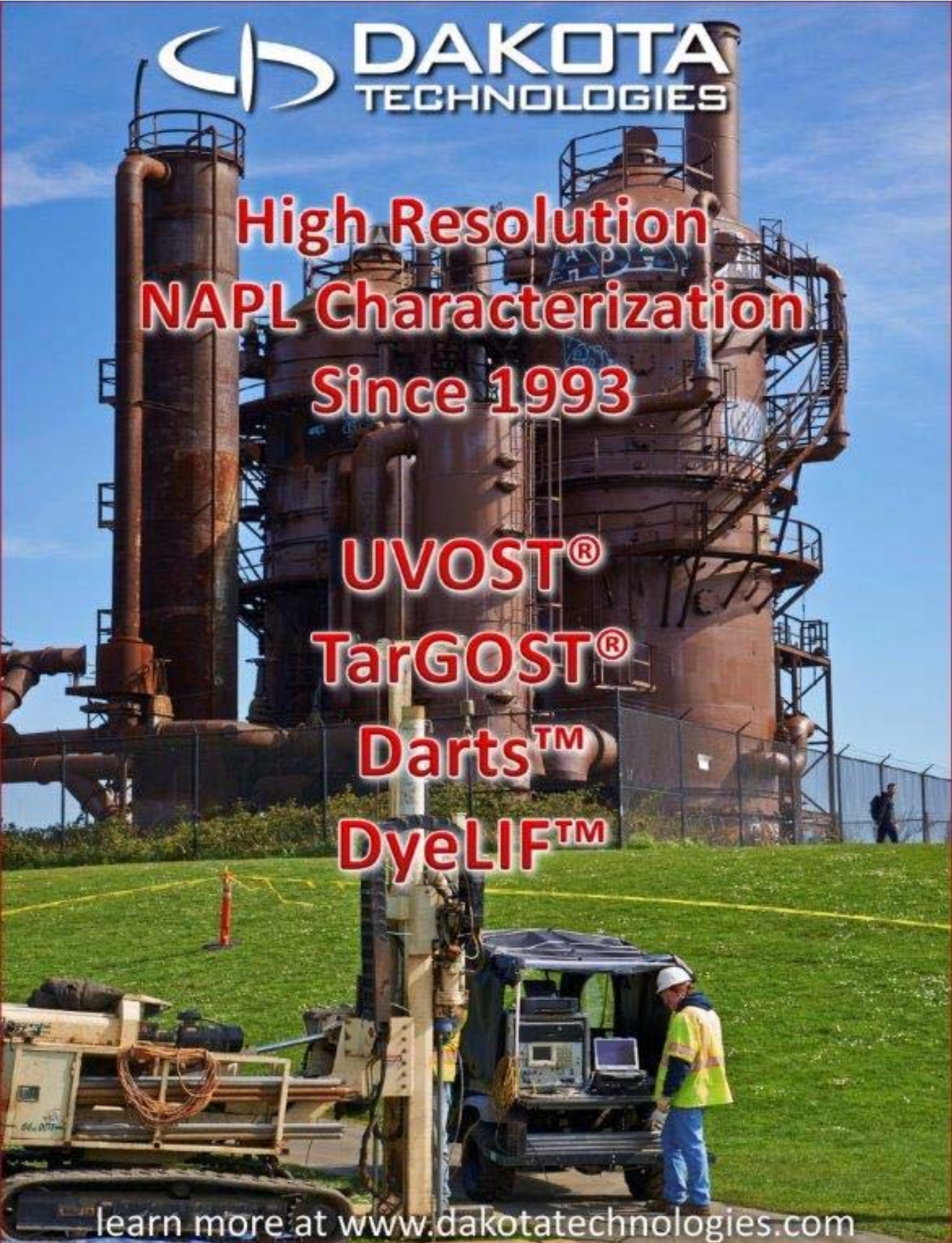


Service from a larger **footprint**

Conestoga-Rovers & Associates (CRA) and GHD have come together in an exciting merger unparalleled in our industry

We have joined together to create a global leader in engineering, environmental consulting, architecture, and construction services

For more information about GHD, visit www.ghd.com



**DAKOTA
TECHNOLOGIES**

**High Resolution
NAPL Characterization
Since 1993**

**UVOST®
TarGOST®
Darts™
DyeLIF™**

learn more at www.dakotatechnologies.com

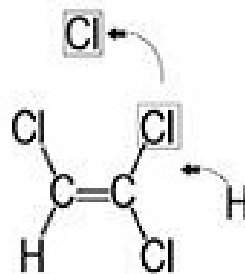


ORIN

Technologies



Chemical Oxidation



Reductive Dechlorination



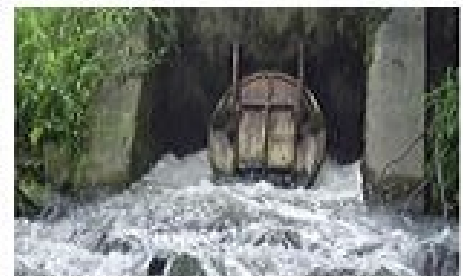
Free Product Removal



Metal Remediation



Traditional and Advanced Oxidation



Wastewater Treatment

ORIN Technologies, Inc. (ORIN)
mission is to provide innovative remediation and water treatment services using emerging and proven technologies resulting in total client satisfaction.

ORIN TECHNOLOGIES
 405 INVESTMENT COURT
 VERONA, WI 53593
 (608) 838-6699
 lkinsman@orinrt.com
<http://ORINRT.com>

Introduction to the Western Michigan University Department of Geological and Environmental Sciences

W

We are excited to announce our name change to the Department of Geological and Environmental Sciences

(formerly Geosciences). As our program has evolved over the past 53 years, we have expanded our emphasis on applied environmental and hydrogeological research. We have 13 faculty members with active research programs in hydrogeology, environmental science, sedimentary geology, remote sensing, geophysics, and geochemistry. Our department is the home of the Michigan Geological Survey (MGS) and the Michigan Geological Repository for Research and Education (MGRRE). The MGS promotes research and mapping of Michigan's natural resources toward their sustainable use. MGRRE serves as the Michigan Rock Library – a facility that curates subsurface samples from every rock unit in the Lower Peninsula, including samples from

many groundwater aquifers and hydrocarbon reservoirs. MGRRE also supports faculty and student research into aquifer and reservoir characterization.

Our environmental and hydrogeology students receive training for successful careers in environmental site assessment, groundwater studies, and remediation at both the undergraduate and graduate levels. Our curriculums integrate a wide variety of coursework and hands-on research, including a six week, intensive field camp that is recognized internationally. These students investigate remediation techniques, well drilling, water and soil sampling and testing, and aquifer tests. Our geology and earth science majors develop the skills necessary for successful careers in energy and natural resource industries, academia, earth science education, and governmental agencies. The department offers one-on-one mentoring to all our undergraduates through research programs conducted and facilitated by both faculty and graduate students.

If you have students interested in earth science, geology, environmental science, and/or hydrogeology– please let them know that Western Michigan University's Department of Geological and Environmental Sciences is interested in hearing from them.

Article submitted by Thomas R. Howe III, Western Michigan University

New Section Website Page

A new page has been added to the Michigan Section website. The page, "Student Information" located on the website at <http://mi.aipg.org/studentsinfo.html> features information about the Student Chapters of the Michigan Section. Currently, the annual reports for each of the chapters has been uploaded; additional information will be added in the future. Please check out the page to see what our student chapters have been up to recently!

Welcome New Members

The Michigan Section is continuing to grow. Please welcome the following new CPGs, Professional Members, Young Professional Members, Associate Members, and Students:

Sienna Fasel, MEM-2982; Renee Soulliere, SA-9143; Raigen Blake, SA-9247; Regan Brandt, SA-9056; Kelly Brown, SA-9276; Kara Donahue, SA-9165; Tye Krukowski, SA-9097; Nathan Strzelewicz, SA-9097; Raven Wright, SA-5115; Daryl Strandbergh, AS-0164; Charles Hackel, MEM-2998; Jonathan Haynes, MEM-3008; Zachary Line, SA-9170;

EFFECTIVE

Vapor Barrier Systems

For Lower Total Cost-To-Closure

 **Land Science**[®]
a division of REGENESIS[®]

 www.landsciencetech.com



Field proven remediation technologies for the most challenging sites.

- *In Situ* Chemical Oxidation
- *In Situ* Chemical Reduction
- Bioremediation
- Stabilization



Aaron Foster, SA-9167; Michele Reaume, SA-9171; Daniel Figac, SA-9166; Andrew Grimm, SA-9168; Kara Donahue, SA-9165; Carly Hoeft, SA-9253; Richard Merz, SA-9283; Evelyn Jobe, SA-9169; and Samuel Cameron, SA-8845.

To each of our new members, the Michigan Section Executive Committee would like to welcome you to our Section and encourage you to attend Section meetings and other events. You are also welcome to provide information for the Member's Corner articles.

ASBOG Exam Offering

The Fundamentals of Geology portion of the ASBOG exam will be offered for the first time in Michigan starting this year. It will be available to be taken each March and October on the campus of Central Michigan University in Mt. Pleasant. The first testing date will be October 5, 2018. Additional information will be forthcoming in the next few weeks.

Where in Michigan? Contest

The March 2018 edition of the newsletter featured a photograph of the northwestern part of the Rockport Quarry near Alpena; the rock is the Middle Devonian age Rockport Quarry Limestone. No one correctly identified the photograph.

This edition features a new photograph at the top of the first page. The first person to correctly identify what the photograph depicts (feature name, location, and formation) will win AIPG swag! Submit your entry to the Editor; only one per person per issue please.

Michigan Section Golf Outing

Last Call to Sign Up! You can register on Eventbrite, by searching "AIPG-Michigan Section Golf Outing" or by contacting Bob Reichenbach directly at bob.reichenbach@ERGrp.net. Ph. 248-773-7986, Fax 248-924-3108.

The outing will again be held at Moose Ridge Golf Course in South Lyon. Great sponsorships and spots for golfers are available. To assist the organizers in planning, please register ASAP. The Registration Form is provided with this newsletter.

The AIPG K-12 Education Grant fund has provided thousands of dollars to a variety of worthy projects, made possible in part to the money raised through our annual golf outing. Your generosity has been, and will continue to be, the key to enabling organizations/schools to provide meaningful

environmental educational programs and activities in the Geosciences.

Thank you for your support!

Student Chapter News



Dr. Jeffrey Howard, faculty sponsor of the Wayne State University student chapter, submitted the

following information.



Students studying an outcrop within Red River Gorge, Kentucky. Photo courtesy of Dr. Jeffrey Howard.

I led a group of 20 students from the WSU chapter of AIPG on a spring break field trip to the Red River gorge geological area in Kentucky, with funding from AIPG. We spent 5 days examining the geology and landforms

STOCK DRILLING



SAVE THE EARTH

Our Job is Boring!



DRILLING SERVICES:

1/2" THRU 10" WELL INSTALLATION
 2.25" THRU 12.25" HAS DRILLING
 SONIC DRILLING 4" TO 12"
 SOLID STEM AUGER DRILLING
 MUD & AIR ROTARY
 CABLE TOOL DRILLING 4" THRU 8"
 CORE DRILLING
 GEOPROBE DRILLING GEOPROBE
 WATER SAMPLING
 HYDROPUNCH SAMPLING
 INFLATABLE PACKERS
 SCREENED AUGERS
 VERTICAL AQUIFER PROFILING
 CHEMICAL AND MECHANICAL
 WELL DEVELOPMENT &
 REHABILITATION
 ORC & INJECTION SERVICES WELL
 REPAIR & CLEANING WELL
 REMOVAL AND ABANDONMENT
 REMEDIATION SYSTEM
 INSTALLATION AND
 REPAIR/ABANDONMENT
 METHANE EXTRACTION POINTS
 PUMPING SYSTEM INSTALLATION,
 REPAIR & SERVICE REMOTE
 WATER PUMPING SYSTEMS
 TRENCHING AND LIGHT
 EXCAVATION SERVICES
 AIRKNIFE SERVICES

DIRECT IMAGING SERVICES:

- MIP/MIHPT/LLMIP ·HPT ·EC
- OIP/OIHPT ·LIF ·CPT
- GAMMA LOGGING
- DOWNHOLE HD VIDEO

CONTACT US AT:

RICH@STOCKDRILLING.COM

734-279-2059

734-279-2076 FAX

WWW.STOCKDRILLING.COM

**HAMP
MATHEWS
& ASSOCIATES**

<http://hampmathews.com/>

**Thank you for sponsoring
the 2017 AIPG Michigan
Environmental Risk
Management Workshop as a
Huron Level Sponsor!**

LimnoTech 
Water | Scientists
Environment | Engineers

LimnoTech is an international leader in helping clients make informed decisions to solve their water resource challenges using the latest water science and engineering.

- Watershed Planning and Management
- Environmental Modeling
- Aquatic Ecosystem Assessment and Restoration
- Drinking Water Supply and Protection
- Contaminated Site Evaluation and Remediation
- Surface Water and Groundwater Characterization
- Stormwater and Nonpoint Source Water Management
- Permitting and Regulatory Assistance
- Hydrogeological Studies
- Green Infrastructure, Water Footprinting and Low-Impact Development Solutions
- Climate Change Adaption and Water Sustainability

www.limno.com

Ann Arbor, MI • Washington, DC
Minneapolis-St. Paul Region • Los Angeles Region



**DUNE
TECHNOLOGIES, LLC**

In-Situ Remediation & Instrumentation

David A. Wardwell
President

1477 South Shore Drive
Holland, Michigan 49423
T 616.377.7043
M 616.450.5788
dave@dunetechnologies.com
www.dunetechnologies.com



FONDRIEST
ENVIRONMENTAL PRODUCTS

when your
research
demands
quality data

888.426.2151 fondriest.com

of the area. We examined most of the Paleozoic section exposed there, and visited numerous arches and natural bridges in the area. We want to thank the AIPG for making this happen!



WSU students overlooking Red River Gorge, Kentucky. Photo courtesy of Dr. Jeffrey Howard.



MTU hosts Spring Fling every year during week 13 of the spring semester. This is a campus wide event where different clubs set up booths with activities to attract new student members. The MTU AIPG student chapter participated this year, and had a station where students could make "pet rocks" and receive information on what AIPG is and the benefits of a student membership. This event was considered a success, as ten people were added to the student chapter roster from sign-ups! We lucked out with incredible weather, and enjoyed sunshine and music all afternoon. The rest of the semester included one last week of classes, finals, and most students are now preparing for field classes.

Looking forward to a great summer in the Keweenaw!

Did You Know?

This article is intended to remind members of various aspects of AIPG and benefits of membership. If there is something you would like to see featured in this column, please contact the Editor...

According to the Section 1.2 of the AIPG Bylaws, "The purposes of the Institute shall be to: 1) Advance the geological sciences and the profession of geology; 2) Establish qualifications for professional geologists; 3) Certify the qualifications of specific individual Member geologists to the public; 4) Promote high standards of ethical conduct among its Members and Adjuncts, and within the

profession of geology; and 5) Represent, and advocate for, the geological profession before government and the general public.

Section Website Reminders

As you may have noticed, the Michigan Section is building a database of geologic photographs on our website. Please submit photographs that you are willing to share to Adam Heft at adam.heft@wsp.com. Don't forget to include your name and a short explanation of what the photograph depicts. The photographs will be uploaded to the website periodically.

If you have suggestions on other items that should be included on the History page, please let a member of the Section Executive Committee know.

Newsletter Notice via E-mail

Please be sure that you continue to receive the Section newsletters and other announcements. Submit an updated e-mail address to Adam Heft at

adam.heft@wsp.com. If you move or change places of employment, don't forget to send your new contact information to both the Section and to National. If you are not receiving announcements directly from the Editor, it is because your email address is not up to date.

Interesting Geology Links

The Editor has received links to various interesting geology-related sites. Some of the more interesting links are included here. If you have any links to geology-related links that you would like to share, please forward them (with a citation, if applicable) to the Editor.

Thanks to Mark Francek of Central Michigan University for sharing via the "Earth Science Site of the Week" emails.

The Simple Science Behind this "Boiling" Sand:

<https://www.mnn.com/green-tech/research-innovations/videos/science-behind-boiling-sand-pretty-simple>.

How Does Geoscience Affect Your State?

<https://www.americangeosciences.org/policy/factsheet/states>.

Employment Opportunities

To serve our members, and provide added value, the Michigan Section posts ads for employment or other opportunities in the Section newsletters. Employment ads will run for one edition unless renewed. There is no cost to our members or sponsors for this service. Send your employment opportunities to the Editor.

No employment ads were received for this edition of the newsletter.

Member's Corner

The Member's Corner includes information about the Section's membership. This is your chance to provide information on where you are and what you are doing. Simply send the information to the Editor for inclusion in this section.

No Members Corner articles were received for this edition of the newsletter.



Geosyntec
consultants

We are
engineers, scientists
and innovators.

Providing
exceptional project
solutions related to
the environment,
natural resources,
and civil
infrastructure

Contact
Rob Ferree
3520 Green Court
Ste. 275
Ann Arbor, MI 48105
(734) 332-8004

geosyntec.com

Many Thanks to
Geosyntec Consultants
for sponsoring the
2017 AIPG Michigan
Environmental Risk
Management Workshop
as a
Superior Level Sponsor!

2018 Michigan Section Executive Committee

Here are the current officers of the Michigan Section. Be sure to talk with them at the Section's events when you see them...

Lyon. Details in the attached flyer and on the Section website.

May 23, 2018: MAEP Professional Development Meeting on "Due Care: What Would You Do?" presented by Jeanne

MacMullan Conference Center in Roscommon, MI. Registration is open! Check out the Section website at: <http://mi.aipg.org/workshop.htm> for additional information.

June 16, 2018: Ohio Section AIPG field trip: Serpent Mound Impact Structure Field Trip and Archaeology Family Event. Registration available at: <https://aipg-ohio.org/field-trip.php>.

June 16-21, 2018: Resources for Future Generations: Energy – Minerals – Water – Earth. Vancouver, Canada.

August 3-5, 2018: Michigan Section AIPG Summer Field Trip: Hard Rock & Heavy Metal. Trip includes a visit to the Eagle Mine near Marquette and Humbolt processing mill, as well as other nearby locations. Complete details and registration information forthcoming.

September 8-11 2018: 55th Annual AIPG Meeting to be held in Colorado Springs, CO.

September, 2018: Joint Michigan Section AIPG and MAEP meeting. Location, meeting topic, and date TBD.

September 20, 2018: AIPG webinar: [Why and How does a Groundwater Well Decline in Performance and What causes a Well to Plug.](#) By Ray Talkington, Ted Morine, and Frank Getchell. CEUs available.

September 29-30, 2018: The Grand Traverse Area Rock and Mineral Club Annual Jewelry, Gem, Fossil, Rock and Mineral Show. Cherryland VFW Post 2780, 3400 Veterans Drive, Traverse City.

October 5, 2018: Fundamentals of Geology portion of the ASBOG exam. Exam to be given on the campus of Central Michigan University, Mt. Pleasant.

October 10-11, 2018: Ohio Section and Cox-Colvin Vapor Intrusion Short Course. To be held at the ODNR H.R. Collins Core Laboratory Conference Room in Delaware, Ohio.

October 19-21, 2018: Central Michigan's 53rd Annual Gem, Mineral, Fossil, Lapidary & Jewelry Show. Main Arena, Ingham County Fairgrounds, 700 E. Ash Street, Mason.

November 29, 2018: Michigan Section AIPG Annual Meeting, Weber's Inn, Ann Arbor.

Fall 2019: 56th Annual AIPG Meeting to be held in the Burlington, Vermont; dates TBD.

2018 AIPG Michigan Section Executive Committee

		
Past President Linda Hensel	President Tim Woodburne	Vice President Amy Hoeskema
		
Treasurer Sara Pearson	Secretary Bill Mitchell	Newsletter Editor Adam Heft

Coming Events

April 12, 2018: Joint Michigan Section AIPG and MAEP Meeting, Michigan Brewing Company, Novi. Dr. Steve Beukema of the MDEQ-RRD will be speaking on "Effects of Air Knifing on Soil Gas Sample Results." See the Insert below...

Schlaufman, DEQ and Panel. The meeting will be held at Block Brewing Company in Howell. Registration link and information at: <http://www.maep.org/event-2899271>.

June 12-13, 2018: Annual Michigan Section Technical Workshop – Environmental Risk



Save the Date!

American Institute of Professional Geologists
 together with
 Michigan Association of Environmental Professionals
 Present

"EFFECTS OF AIR KNIFING ON SOIL GAS SAMPLE RESULTS"
 By Dr. Steve Beukema, MDEQ-RRD

September 18, 2018
 Michigan Brewing Company, 42875 Grand River Avenue, Novi, MI 42875



May 15, 2018: Michigan Section AIPG Golf Outing, Moose Ridge Golf Course, South

Assessment: Emerging Contaminants and Pathways: A New Paradigm. At the Ralph A.

Fall 2020: 57th Annual AIPG Meeting to be held in Sacramento, California; dates TBD.

Fall 2021: 58th Annual AIPG Meeting to be held in Marquette, Michigan; dates TBD.



PROVIDING SUSTAINABLE SOLUTIONS FOR DEVELOPMENT, CONSTRUCTION, RESTORATION AND REDEVELOPMENT CHALLENGES FOR OVER 50 YEARS

Passionate People Building and Revitalizing our World

(800) 837-8800

www.sme-usa.com

Indiana • Michigan • Ohio



To Learn More Visit Us at VaporPin.coxcolvin.com

Advantages of the Vapor Pin® over other methods include:

Use **Coupon Code aipg17** for 10% off your next order. Valid until 3/31/2018.

- No leaks during sample collection, improving sample quality;
- Disposable seal eliminates the need for grout, increasing productivity;
- Connects easily to sampling equipment;
- Easily installed, sampled, and retrieved for reuse;
- Improves diagnostic testing, spatial resolution;
- Reduces sampling time allowing more samples for less cost.



Applications include, but are not limited to:

- Sub-slab soil gas sampling
- De-pressurization studies/testing
- Stray gas evaluations
- Source area characterization
- Mitigation progress monitoring

Vaporpin@gmail.com

EverydayBrilliance
Brilliant engineering solutions - delivered daily.



Celebrating 50 Years of Engineering Excellence

Energy • Water Resources • Public Infrastructure • Urban Renewal



Geotechnical and Environmental Drilling

Since 1974 MATECO Drilling has offered ground breaking solutions on a large variety of geotechnical and environmental drilling projects throughout the United States. Staying up to date with the latest drilling technology including our rotary sonic drill and ground penetrating radar is our top priority for the success of your projects.

Let's work together. Contact us today.

www.mateco.com | info@mateco.com | 616-863-6890



- Geotechnical Drilling
- Environmental Drilling
- Sonic Drilling
- Direct Push Drilling
- Amphibious Soil Sampling
- Direct Image Testing
- Utility Location and Safe Exposure

Contractor Compliant With:



Solutions in Perfect Balance

At ARCADIS, we share a single purpose to improve the environments and lives we touch. A lofty goal, but one we deliver on every day.

Between the creative and the functional, the innovative and the tried and true, the natural and the built environments, present needs and future legacy, imagination and results. We envision a better world. Then we engineer it.

Together we can do a world of good.

www.arcadis-us.com
Imagine the result

 **ARCADIS**

Regulations are complex.
Potential environmental impacts
put your business at risk.
Getting stakeholders onboard is critical.
Environmental due diligence addresses
the issues upfront.

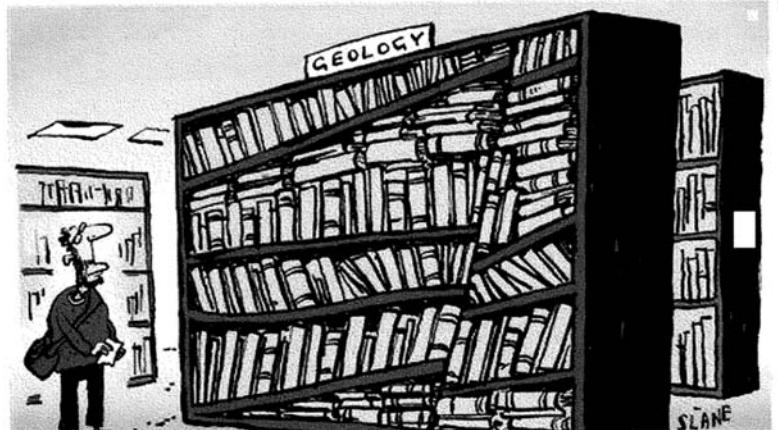
We thrive on challenges

golder.com



Photos – Left: Wayne State Students at the Geology Museum, Chicago.

Right: MTU Student Chapter with Sponsor David Adler





Specializing in engineering services vital to our community and quality of life.

- Environmental Engineering ■ Construction Testing ■ Civil Engineering
- Geotechnical Engineering ■ Structural Engineering ■ UVOST Services

660 Woodward Avenue
Suite 2430
Detroit, Michigan 48226

313.963.2721
www.somateng.com

Detroit ■ Taylor ■ Grand Rapids ■ Cleveland ■ Brooklyn Heights ■ Beltsville ■ Washington, DC

Many Thanks to
Somat Engineering
 for sponsoring the
 2017 AIPG Michigan
 Environmental Risk Management Workshop
 as a
Superior Level Sponsor!

14th Annual AIPG Michigan Section Golf Outing Tuesday May 15, 2018

The 14th Annual AIPG Michigan Section Golf Outing promises to be another successful event. Proceeds generated from the outing benefit the AIPG K-12 Education Grant fund, which provides thousands of dollars to a variety of worthy projects every year. Your generosity has been, and will continue to be the key to enabling organizations/schools to provide meaningful educational programs and activities in the Geosciences.

This event also offers our sponsors exposure to many of the most influential professionals in our industry.

The outing will take place at Moose Ridge Golf Course in South Lyon, Michigan.

Place: Moose Ridge Golf Course
11801 Doane Road
South Lyon, MI 48178

Event: 18-Hole Scramble

Date: May 15, 2018

Registration: 8:00 to 9:15 am

Shotgun Start: 9:30

Rainout Date: May 17, 2018 (based on availability)

Registration

Register/Pay by May 5, \$600/foursome, \$170/Individual
Register/Pay after May 5, \$680/foursome, \$190/Individual

Golfer 1: _____

Golfer 2: _____

Golfer 3: _____

Golfer 4: _____

Accepted forms of payment include:

Eventbrite-search AIPG Michigan

<https://www.eventbrite.com/e/aipg-mi-section-golf-outing-tickets-41703835294?aff=eivtefrnd>



or



Make Checks to:
Michigan Section-AIPG
c/o ERG
28003 Center Oaks Ct., Suite 106
Wixom, Michigan 48393

Attn: Bob Reichenbach bob.reichenbach@ergrp.net

Company: _____

Contact: _____

Email: _____

CALL 248-773-7986, or
FAX 248-924-3108 to reserve your place!
The AIPG-MI Section is a nonprofit
501(c)(6) Organization.

Phone: _____

Includes: Continental Breakfast, green fees, range balls, Lunch at turn, networking opportunities, and DINNER. Also includes: 50-50 and Grand Prize raffles along with other prizes including, \$10,000, vacations, or sets of clubs for a "Hole in One", Putt-4 Dough \$2,500, men's and women's Longest Drive and Closest to Pin contests, and goodie bags for all participants.

14th Annual AIPG Michigan Section Golf Outing

Tuesday May 15, 2018

Sponsor Package Information

Executive Copper Sponsor - \$2,500

- 1 foursome and 33% discount for additional golfers
- Highest Visibility Signage at the Event
- Corporate recognition at the awards presentation

Exclusive Dinner Sponsor- \$2,000

Investment includes:

- 1 foursome and 33% discount for additional golfers
- Signage at the Dinner
- Corporate recognition

Beverage Sponsors - \$1,000 (2 available)

Investment includes:

- Signage at the club house and on the Beverage Cart or Oasis.
- Corporate recognition

Breakfast/Luncheon Sponsor - \$1,000

Investment includes:

- Signage at the grill/tent.
- Corporate recognition

Hole-in-one Sponsors - \$800 (4 available)

Will have visible exposure on Par 3 Holes.

If a golfer hits a hole-in-one, the prize will be, either \$10,000, a golf vacation or a deluxe set of irons.

Tee Box or Hole/Flag Sponsor - \$280

(18 available)

Investment includes:

- Tee box signage and
- Pin Flag with logo

Skill Sponsors – \$500

Investment includes:

(4 available)

“Longest Drive”, “Closest to Pin” awards to Male/female for each.

Practice Tee Sponsor – \$300

Investment includes:

(1 available)

Exclusive Signage at the Practice Tee

Putt-4-Dough – \$400 Signage on the putting area, corporate* recognition during the event (includes contest coordination at the turn and following golf provided by you). Provides interaction with all participants.

Team Photo Sponsors:

\$500 SPONSOR FEE – Signage and option to provide a photographer from your organization.

Goodie Bag Sponsor - Give-away items for 120 or more golfers